

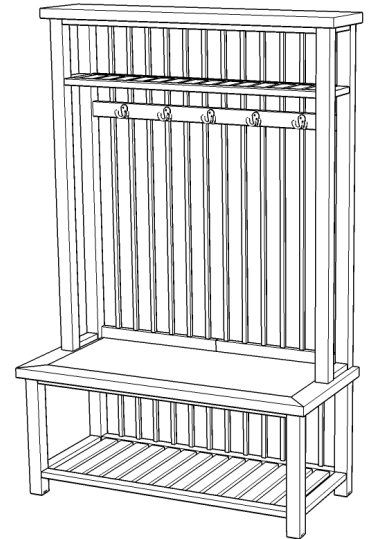
# 88 5411 49 Cabin Creek Hall Tree Stand

## IMPORTANT NOTE

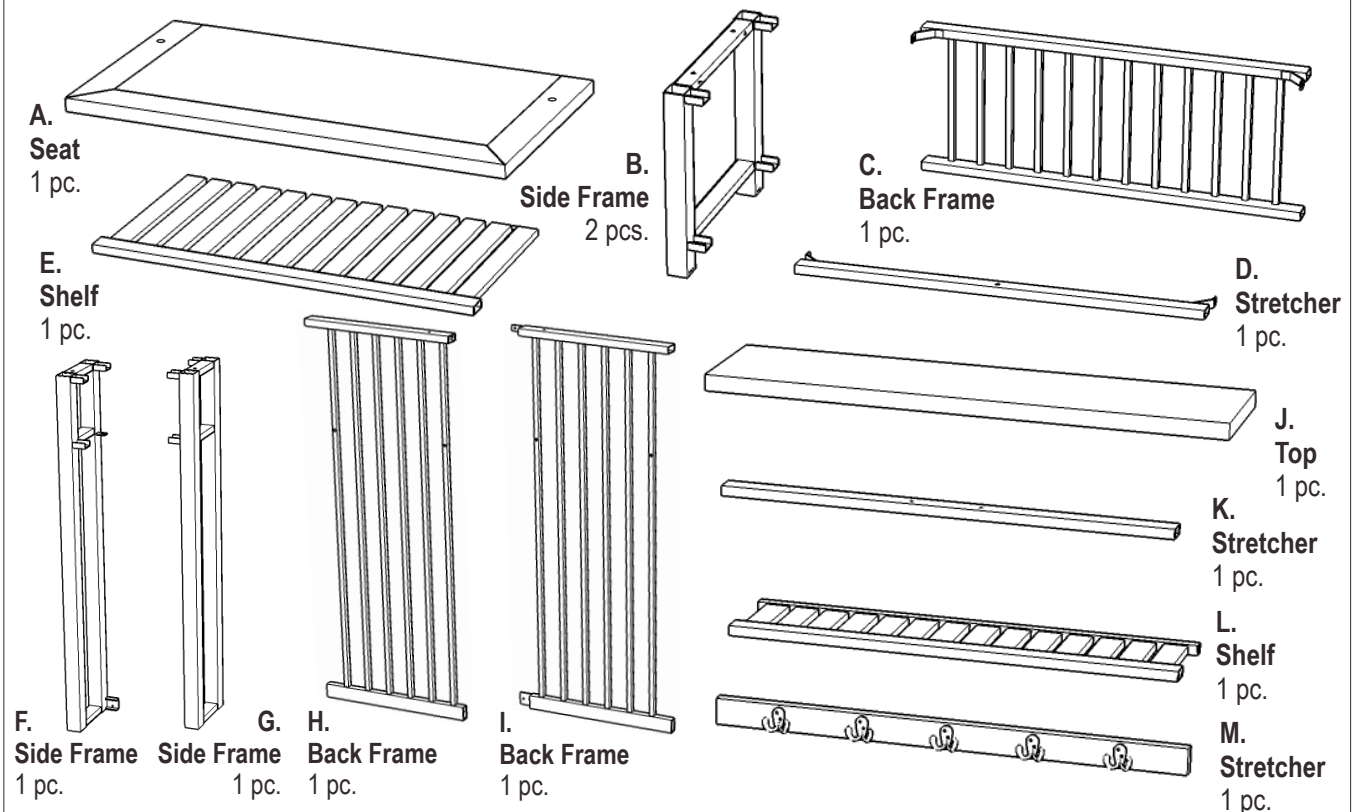
Carefully remove all the parts from the carton and put them individually on a soft cloth to prevent scratches or other damages occurring to the parts.

We have taken great care in the design of this product and request that you carefully and strictly follow our assembly instructions to ensure a completed product as it was designed.

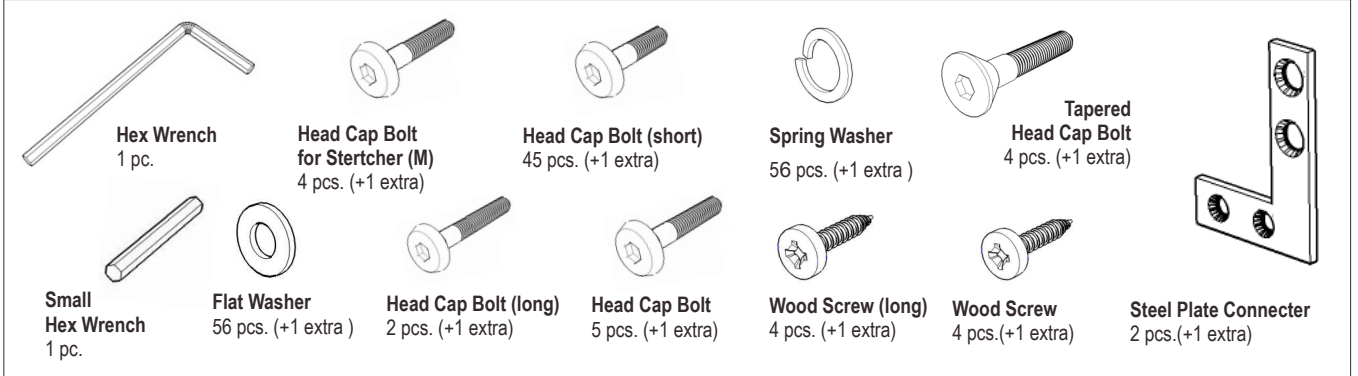
*Home  
Styles*



## Part List



## Hardware List



**Tools required for assembly :** Phillips screwdriver

**Tools recommended for assembly :** Level

**Home Styles Consumer Assistance:** [www.homestyles-furniture.com](http://www.homestyles-furniture.com),  
[servicedesk@homestyles-furniture.com](mailto:servicedesk@homestyles-furniture.com), 888-680-7460, 877-831-0319

## Assembly Instructions 2/4

### IMPORTANT

- \* Do not tighten up all the screws until each part is properly assembled.
- \* You should keep Hex Wrench in a safe place as you may need to tighten up the Head Cap Bolts in the future.
- \* After assembly, item must be level to work properly. Use the included adjustable levelers to level.
- \* Use a soft cloth between these parts and the floor.

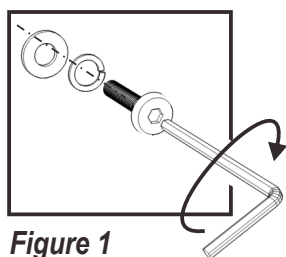
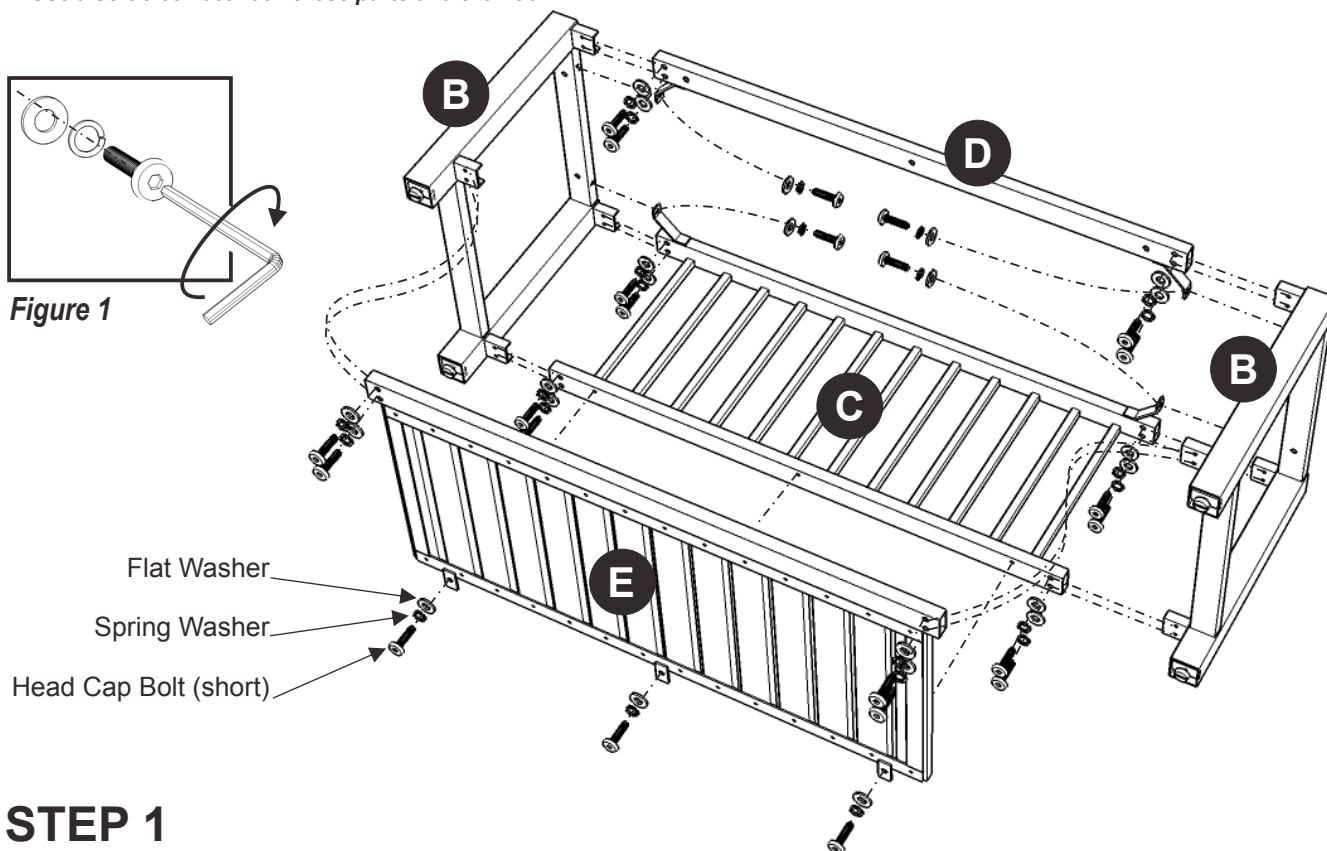


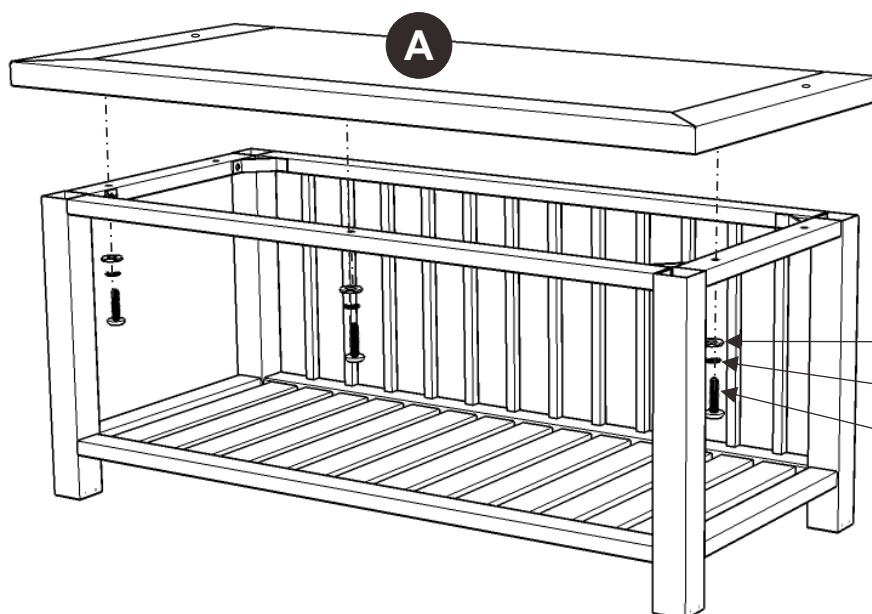
Figure 1



## STEP 1

Attach Back Frame (C), Stretchers (D) and Shelf (E) to Side Frame (B) with Head Cap Bolts (short), Spring Washers and Flat Washers. (see Figure 1)

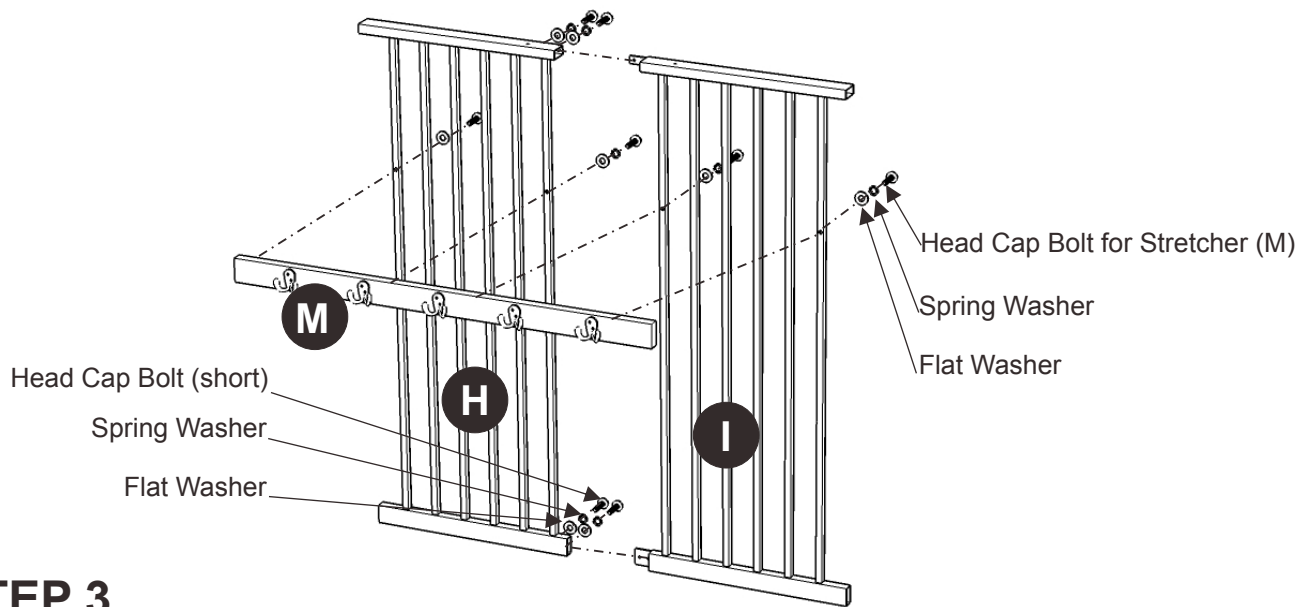
Attach Side Frame (B) to unit with Head Cap Bolts (Short), Spring Washers and Flat Washers.



## STEP 2

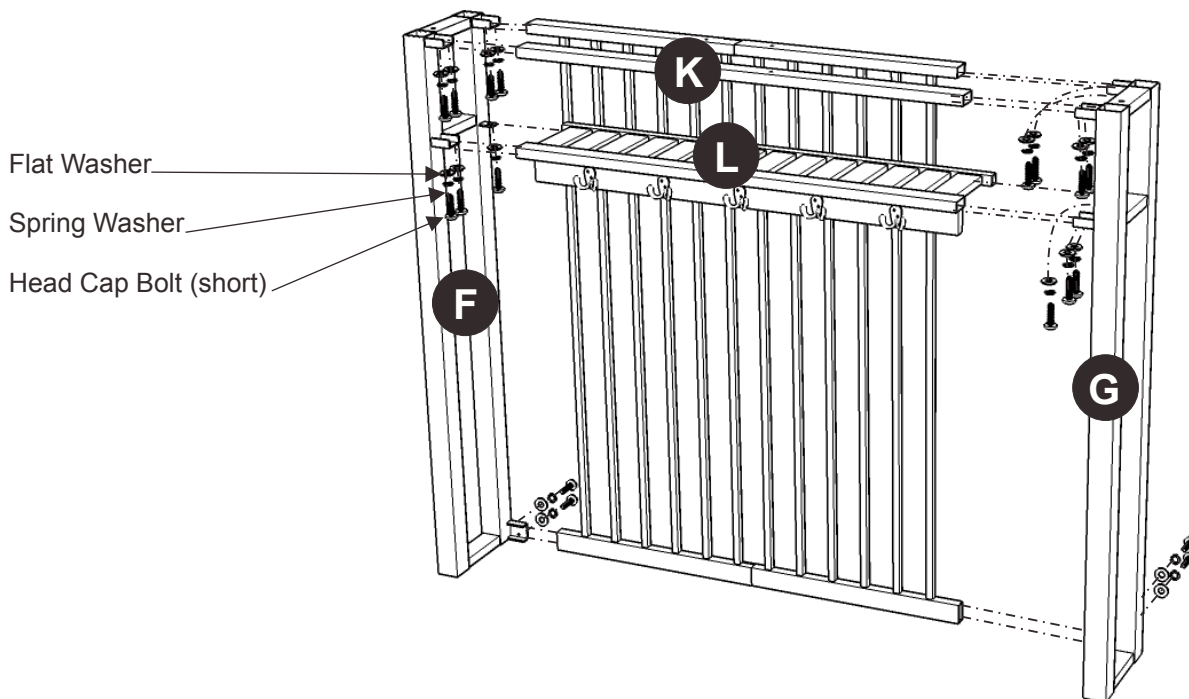
Attach Seat (A) to unit with Head Cap Bolts, Spring Washers, Flat Washers.

Flat Washer  
Spring Washer  
Head Cap Bolt



## STEP 3

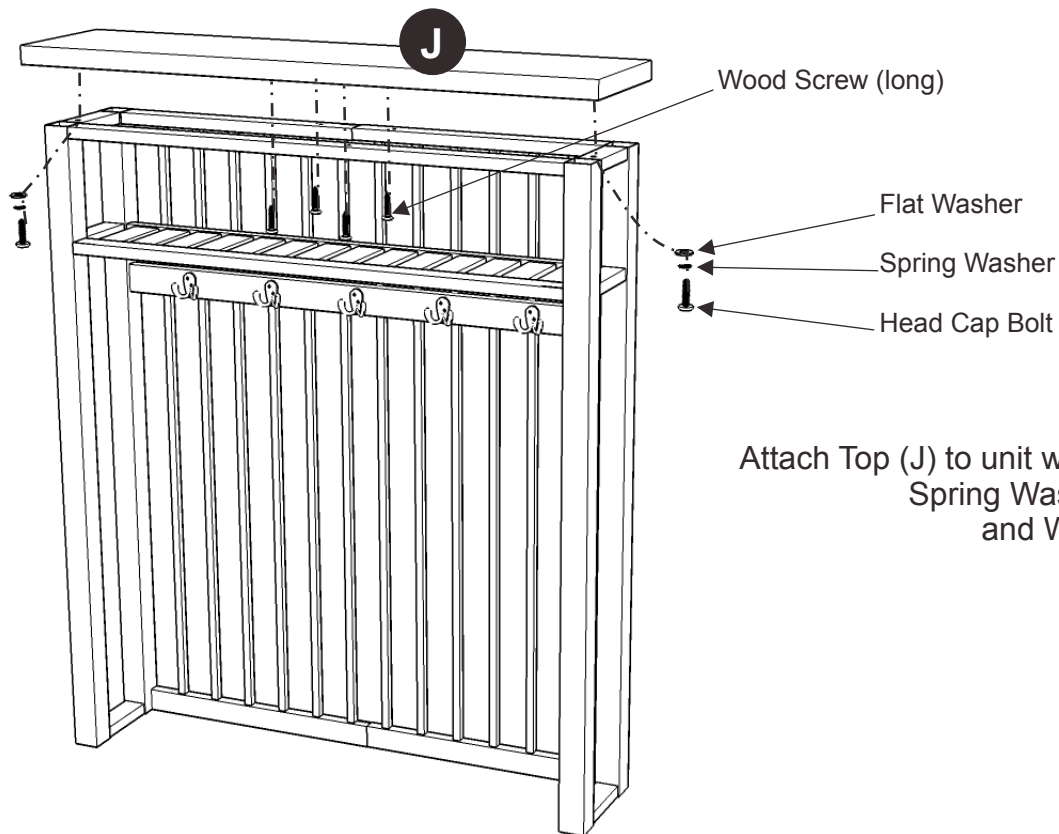
Assemble Back Frame (I), Back Frame (H) and Stretcher (M) by using Head Cap Bolts (short), Head Cap Bolts for Stretcher (M), Spring Washers and Flat Washers.



## STEP 4

Attach Side Frame (F) to unit with Head Cap Bolts (short), Spring Washers and Flat Washers.

Attach Stretcher (K), Shelf (L) and Side Frame (G) to unit with Head Cap Bolts, Spring Washers and Flat Washers.



## STEP 5

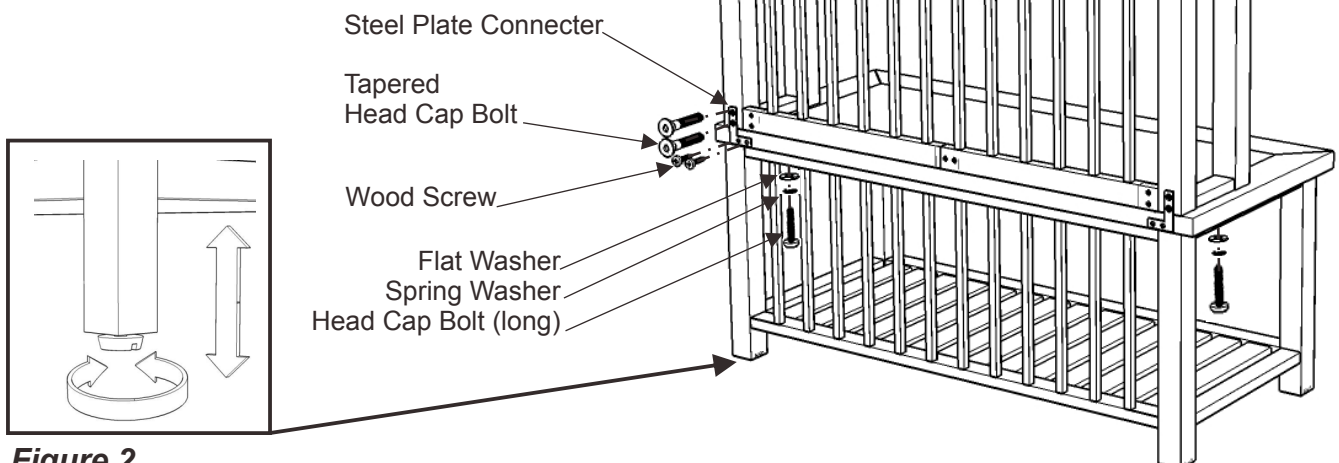
Attach Top (J) to unit with Head Cap Bolts, Spring Washers, Flat Washers and Wood Screws (long).

## STEP 6

Attach upper unit onto base unit with Head Cap Bolts (long) Spring Washers, Flat Washers.

Attach Steel Plate Connectors to unit with Tapered Head Cap Bolts and Wood Screws.

To level the unit, adjust the adjustable levelers on the bottom of unit. (see Figure 2)



**Figure 2**